



Connector Terminal block for Servo amplifier

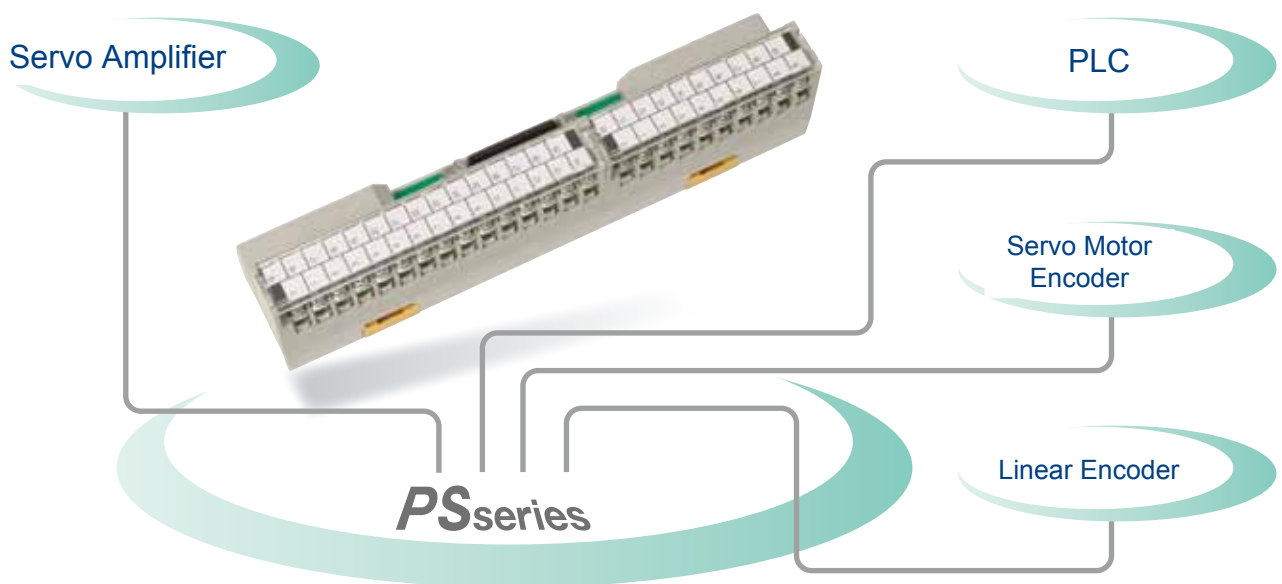
# PS series

# PS series

Easy to connect with servo amplifier.

Improved customization during connecting with PLC, linear encoder and servo motor encoder.

## Example



## Features

- Connect to Yaskawa  $\Sigma$  series and Mitsubishi J series, and others.
- Both 35mm pitch DIN rail mount and direct mount.
- Ground terminals. (Except PX7DS/PS7DS series.)
- Terminals can be "Standard" and "Spring Lifted".

Standard



Spring Lifted



## ● Order Number



# PX7DS-50 VM 14

Order No.

Terminal Qty.

Connector direction

PX : Spring lifted terminals  
PS : Standard terminals

20  
26  
36  
40  
50  
68

VM : Vertical mount  
HM : Horizontal mount



# PX7DW-20V14B-F

Order No.

PX : Spring lifted terminals  
PS : Standard terminals



# PX7D-10V14-S

Order No.

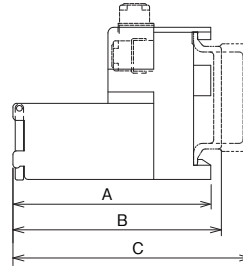
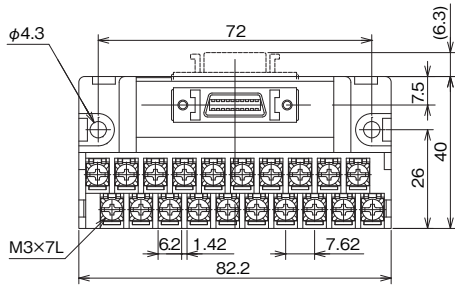
PX : Spring lifted terminals  
PS : Standard terminals

## ● Specifications

Order No.	PX7DS-**VM/HM14 PS7DS-**VM/HM14	PX7DW-20V14B-F PS7DW-20V14B-F	PX7D-10V14-S PS7D-10V14-S
Terminal Qty.	20, 26, 36, 40, 50, 68	20	10
Terminal Pitch	7.62mm		
Recommended Wire	1.25mm <sup>2</sup>		
Tightening Torque	0.5~0.75N·m(When using crimp terminal)		
Terminal Size	M3×6L		
Voltage Rating	AC, DC125V		
Maximum Current	0.5A		
Withstand Voltage	AC500V 1min (AC1000V 1 min with ground)		
Insulation Resistance	>1000MΩ *Between reception and ground terminal DC500V M		
Vibration Resistant	10~55Hz / Double amplitude :1.5mm		
Shock Resistant	500m/S <sup>2</sup> (>50G)		
Ambient Temperature	-20~+55°C -4 ~ 131°F *Operating		
Ambient Temperature	-25~+85°C -13 ~ 158°F *Storage		
Relative Humidity	45~85%		
Mount Procedure	DIN rail or direct mount		
Connector	102**-6202PE (3M)	10220-6202PE (3M)	36110-1110-PL (3M)

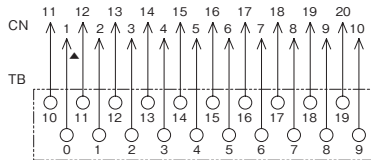
## PX7DS-20VM14/HM14 PS7DS-20VM14/HM14

Diagram



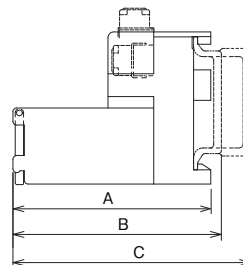
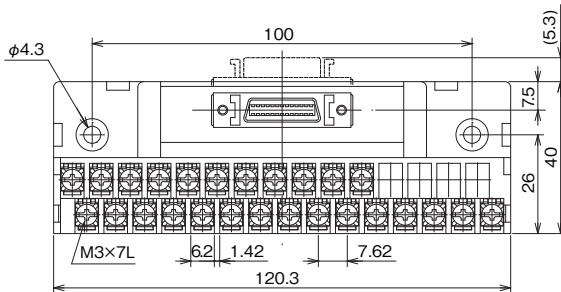
P / N	A	B	C
PX7DS	52	54.8	62.5
PS7DS	40.5	43.3	51.0

Circuit



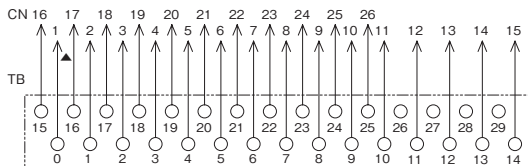
## PX7DS-26VM14/HM14 PS7DS-26VM14/HM14

Diagram



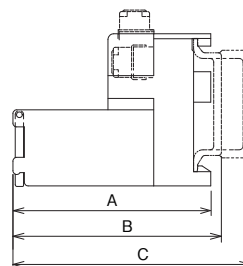
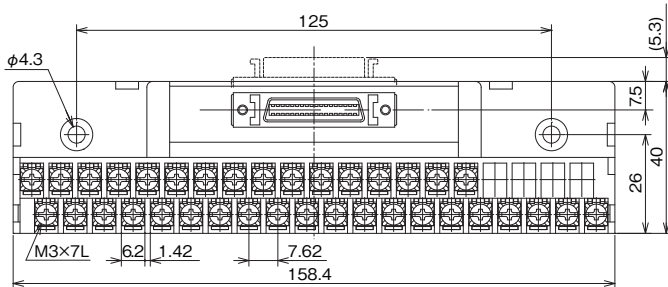
P / N	A	B	C
PX7DS	52	54.8	62.5
PS7DS	40.5	43.3	51.0

Circuit



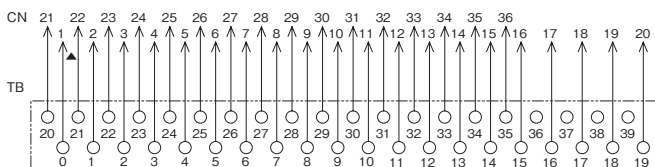
## PX7DS-36VM14/HM14 PS7DS-36VM14/HM14

Diagram



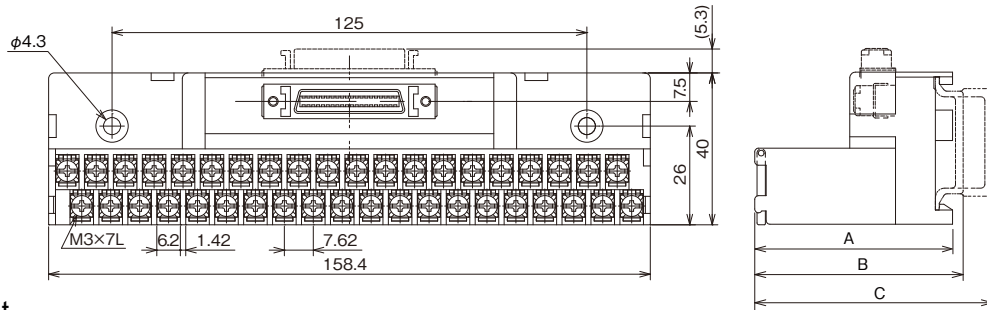
P / N	A	B	C
PX7DS	52	54.8	62.5
PS7DS	40.5	43.3	51.0

Circuit



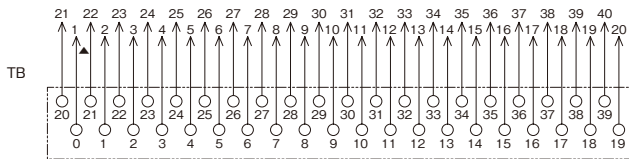
# PX7DS-40VM14/HM14 PS7DS-40VM14/HM14

Diagram



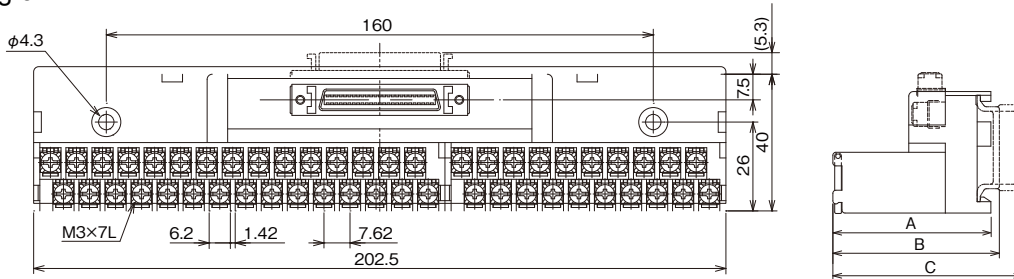
P / N	A	B	C
PX7DS	52	54.8	62.5
PS7DS	40.5	43.3	51.0

Circuit



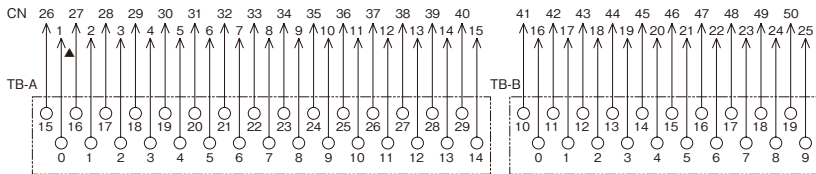
# PX7DS-50VM14/HM14 PS7DS-50VM14/HM14

Diagram



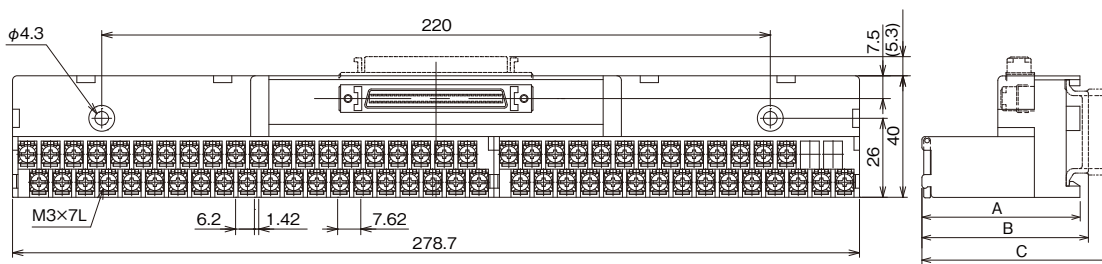
P / N	A	B	C
PX7DS	52	54.8	62.5
PS7DS	40.5	43.3	51.0

Circuit



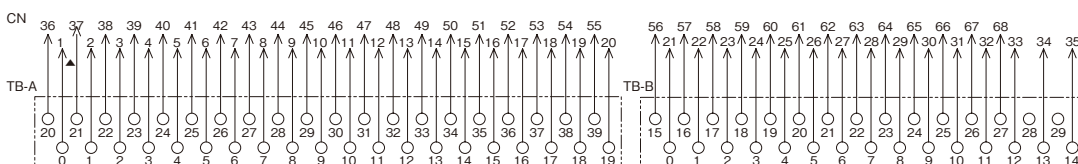
# PX7DS-68VM14/HM14 PS7DS-68VM14/HM14

Diagram



P / N	A	B	C
PX7DS	52	54.8	62.5
PS7DS	40.5	43.3	51.0

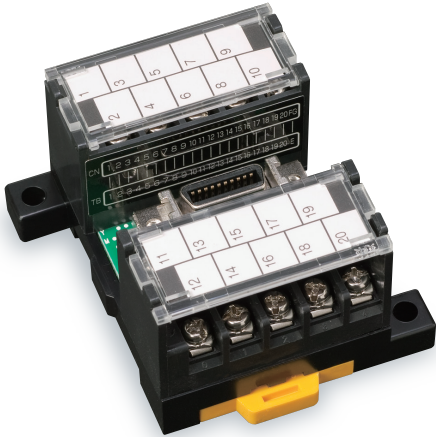
Circuit



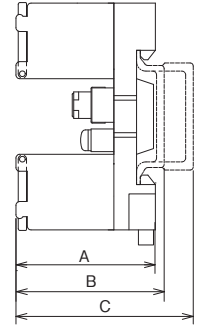
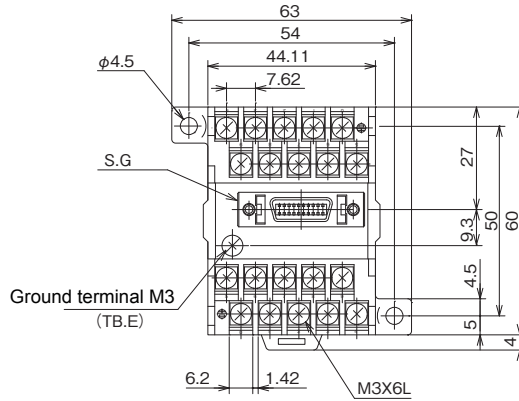
# Half size

For handling input and output signals of servo amplifier.  
(Emergency stop, electro-magnetic interlock, error signal, etc.)

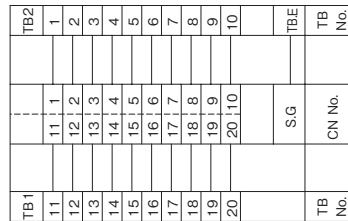
**PX7DW-20V14BF**  
**PS7DW-20V14BF**



Diagram



Circuit

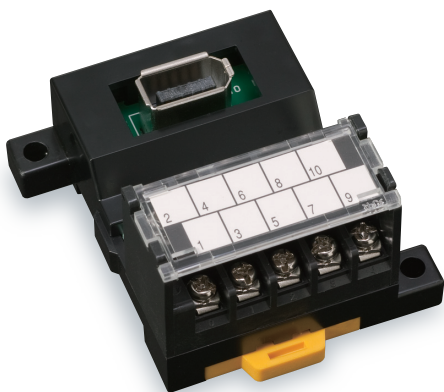


P / N	A	B	C
PX7DW	48	50.3	58
PS7DW	36.5	38.8	46.5

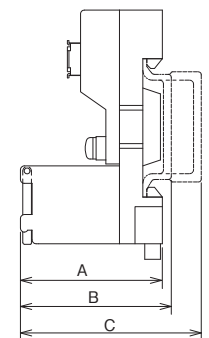
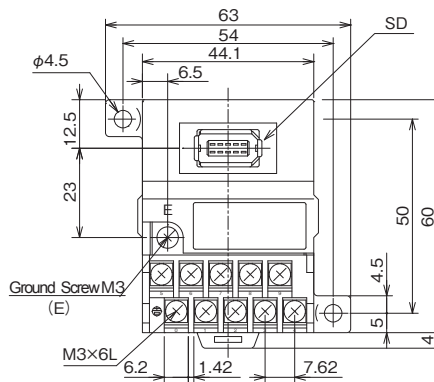
# 10 Poles

For handling servo amplifier, servo motor, encoder, liner encoder signals.

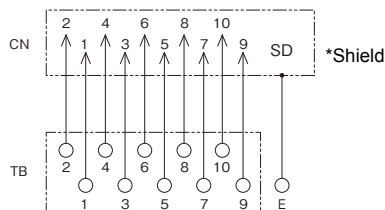
**PS7D-10V14S**



Diagram



Circuit



P / N	A	B	C
PX7D	48	50.3	58
PS7D	36.5	38.8	46.5

## Items

Item	P / N	Rail	Length (mm)	Package Qty.
DIN Rail	UK-c	—	1000,1500, 2000	10
	EK-ch	—	1000,1500, 2000	10
Rail End Cap	UK-ec	UK-c	—	50
	EK-ec	EK-ch	—	50
End Bracket	UK-b	UK-c, EK-ch	—	100
	EK-b	UK-c, EK-ch	—	100

DIN Rail



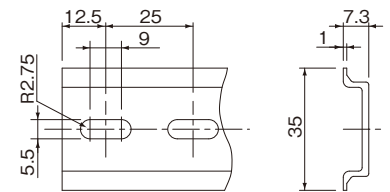
UK-c

Rail End Cap

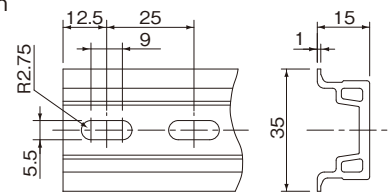


EK-ec

UK-c



EK-ch



End Bracket



UK-b



EK-b

### Safety Precautions



- Please use appropriate current and voltage according to the manual.
- Please do not apply abnormal shock or vibration. It may cause a malfunction or failure.
- Please do not touch terminal block part and close the terminal cover while the power is on.
- Our products were not designed or manufactured for use in devices or systems directly related to human life. Users who intend to use the product described in this manual for special purposes must contact Toho Technology Inc beforehand.
- If this product is to be used in a facility where failure may cause serious accident or death, safety devices must be installed beforehand to minimize the likelihood of accident.
- When tightening terminal screws without wiring, the recommended tightening torque is 0.4 - 0.6 N/m.

---

The products and specifications described in this manual or the content and presentation of the manual may be changed without notice to improve the product and/or the manual.

---



**Toho Technology**

[www.tohototechnology.com](http://www.tohototechnology.com)

**Toho Technology Inc.**

4809 North Ravenswood Avenue, Suite113, Chicago, Illinois 60640 Tel: 773.583.7183