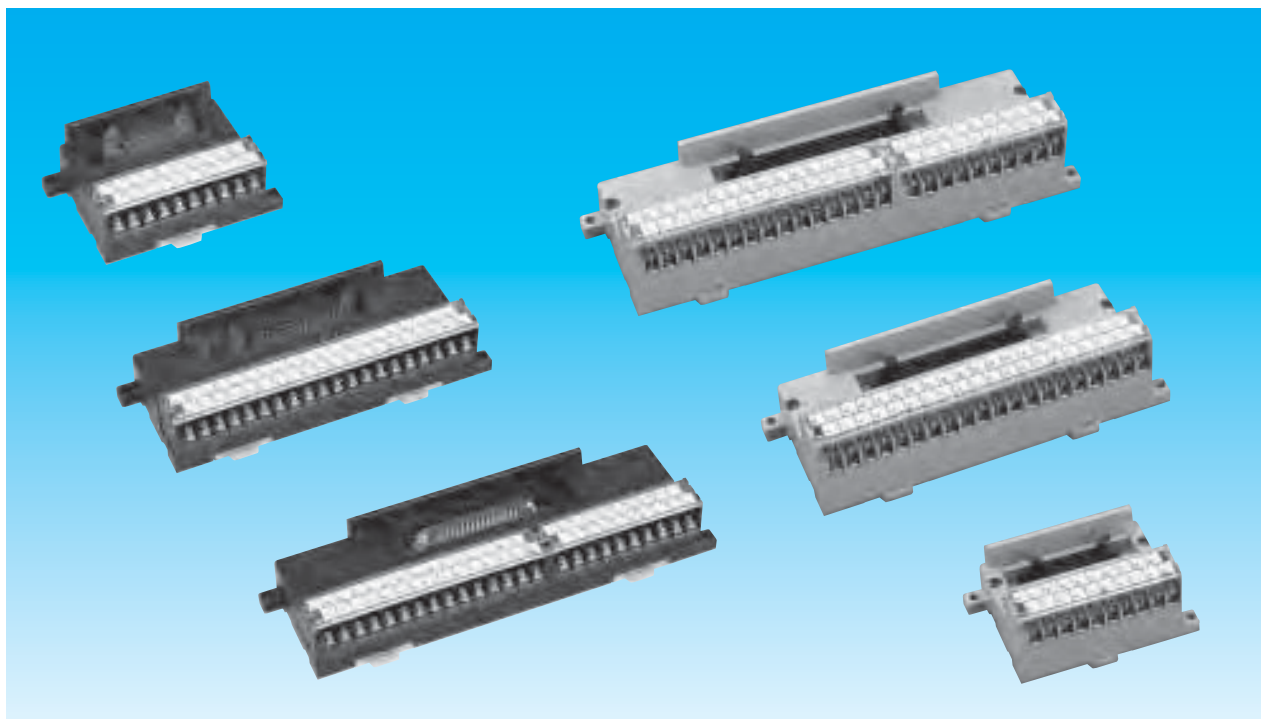


PS7L/PX7Lseries



Features

- LED indicates I/O operation status.
- Standard terminal type "PS7L Series" and Spring lifted terminal type "PX7L series" are available.
- Select from 20P (16 circuits), 40P (32 circuits), 50P (50 circuits).
- Vertical and back side connectors are available. *Back side connector is not available for DIN rail
- UL·C-UL·CSA listed.

How to order

PS7 L - 40 V 3 - I

① ② ③ ④ ⑤

- ① Series No. : PS7...Standard terminals
 PX7...Spring lifted terminals : 20, 40, 50
- ② Terminal Quantity
- ③ Connector Direction : V...Vertical Type *Connector facing front
 H...Horizontal Type *Connector facing top
 B...Back Type *Connector facing back
- ④ Connector Type : Product Number
*Please select number from the connector list on page 133.
- ⑤ I/O Type : I ...For Input
 O...For output

* Please specify if you require UL, C-UL, CSA compliance

Specification

Terminal No.	20, 40, 50
Terminal Pitch	7.62mm
Recommended wire	Max. 1.25mm ²
Tightening Torque	0.5~0.75N·m (When using crimp terminal)
Terminal Size	M3×6L
Voltage Rating	DC24V
Maximum Current	Input : Impedance 3.3kΩ (DC24V) Output : 500mA
Withstand Voltage (50/60Hz)	AC500V·1min. with terminals AC2000V·1min. with ground
Insulation Resistance	>1000MΩ *Between reception and ground terminal DC500V/M
Vibration Resistant	10~55Hz/Double amplitude :1.5mm
Shock Resistant	491m/s ² (>50G)
Ambient Temperature	-20~+55°C *Operating
Ambient Temperature	-25~+85°C *Storage
Relative Humidity	45~85%
Mount Procedure	DIN Rail or direct mount

*Please see 156-159 for UL, CSA compliance in detail.

PS7L
PX7L



Toho Technology
PEOPLE - TECHNOLOGY - VISION.

Connector list () : Connector pole number

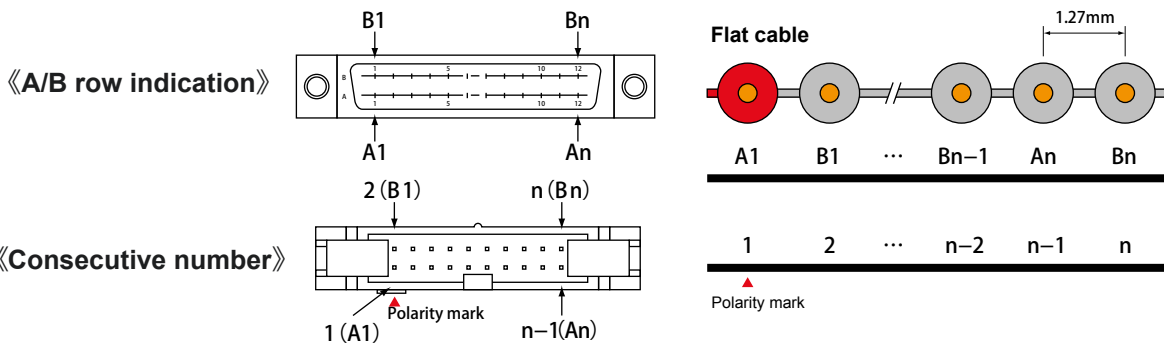
P/N	Manufacturer	Connector Side	Mounting Direction	20P (10P)	40P (20P/24P)
2	Omron	Interface side	V/B	XG4A-1071	XG4A-2031
			H	XG4A-1074	XG4A-2034
		Cable side		XG4M-1031	XG4M-2030
3	JAE	Interface side	V/B	PS-10PE-D4T1-LP1	PS-20PE-D4T1-LP1
			H	PS-10PE-D4LT1-LP1	PS-20PE-D4LT1-LP1
		Cable side		PS-10SEN-D4P1-1C	PS-20SEN-D4P1-1C
4	Hirose Connectors	Interface side	V/B	HIF3BA-10PA-2.54DSA	HIF3BA-20PA-2.54DSA
			H	HIF3BA-10PA-2.54DS	HIF3BA-20PA-2.54DS
		Cable side		HIF3BA-10D-2.54R	HIF3BA-20D-2.54R
6	Fujitsu	Interface side	V/B	—	FCN-364P024-AU
		Cable side		—	FCN361J024- **
10	Yamaichi Electric	Interface side	V/B	FAP-1001-1204-OBS	FAP-2001-1204-OBS
			H	FAP-1001-1202-OBS	FAP-2001-1202-OBS
		Cable side		FAS-1001-2101-OBF	FAS-2001-2101-OBF
11	KEL	Interface side	V/B	6201-010-256	6201-020-256
			H	6201-010-258	6201-020-258
		Cable side		6200-010-601	6200-020-601
12	Daiichi Denshi	Interface side	V/B	FRC5-C10S53T-OL	FRC5-C20S53T-OL
			H	FRC5-C10L53T-OL	FRC5-C20L53T-OL
		Cable side		FRC5-A010-2TOS	FRC5-A020-2TOS
13	J S T	Interface side	V/B	—	RX-H201TD-1190
			H	—	RX-H201SD-1190
		Cable side		—	RX-S201S-1390
14	3M	Interface side	V/B	3662-6002LCSC	3428-6002LCSC
			H	3662-5002LCSC	3428-5002LCSC
		Cable side		7910-F500SC	7920-F500SC



- Please contact us for more cable variations.
- Please see page 155 - 157 for UL, CSA compliance in detail.

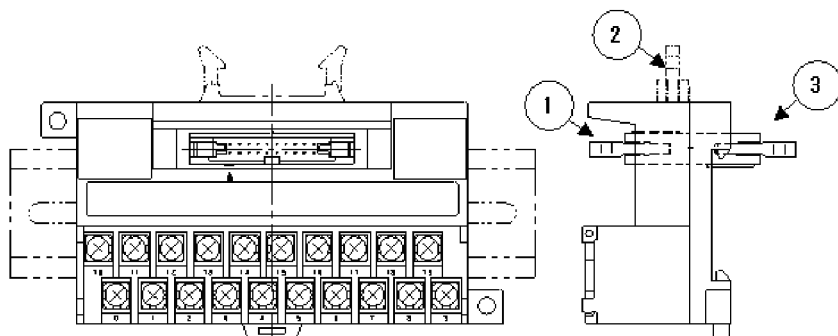
Connector Pin Assignment

- Ensure connector pins are assigned properly.



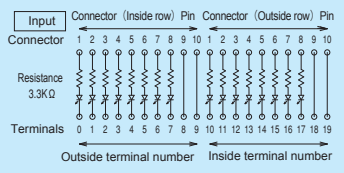
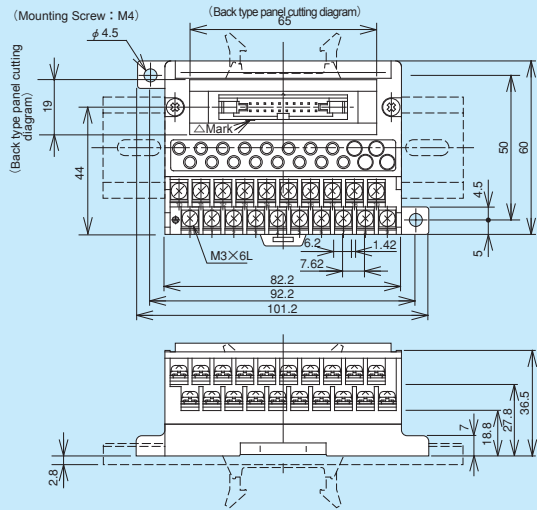
Connector Direction

- ① V...Vertical Type
- ② H...Horizontal Type
- ③ B...Back side Type

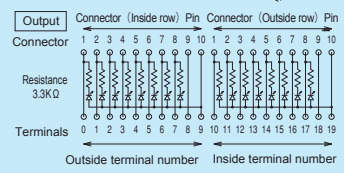
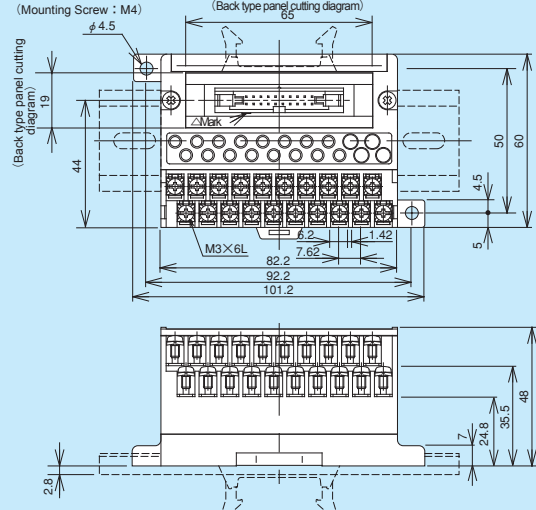


PS7L/PX7Lseries

PS7L-20V/H/B

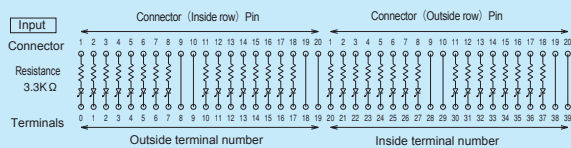
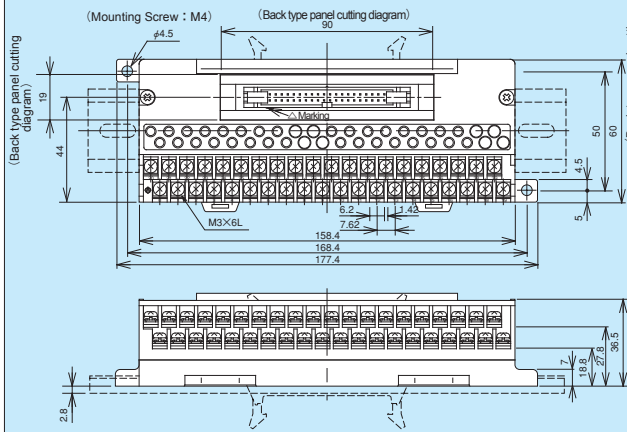


PX7L-20V/H/B

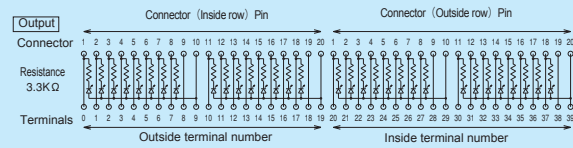
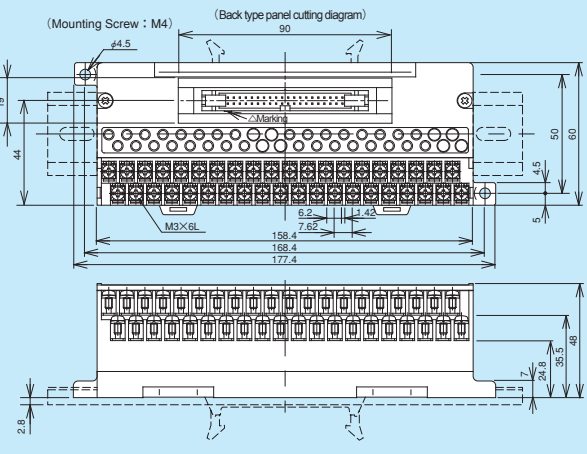


*Front and back row connector pin assignment are reversed in case of using back side type

PS7L-40V/H/B



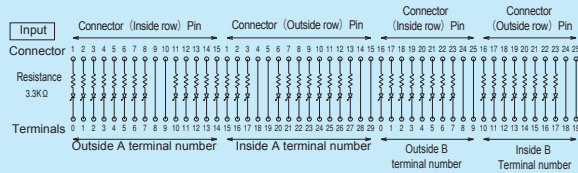
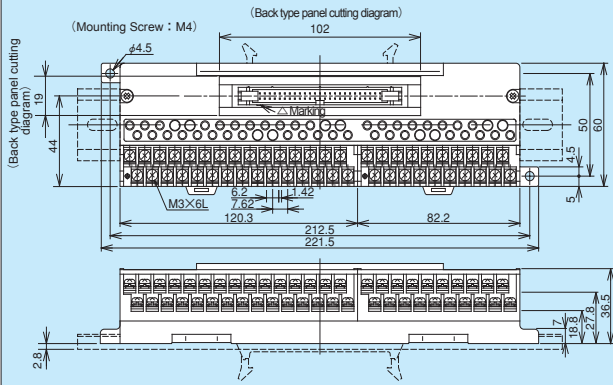
PX7L-40V/H/B



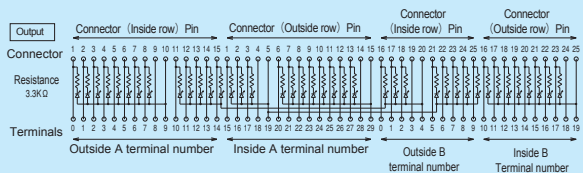
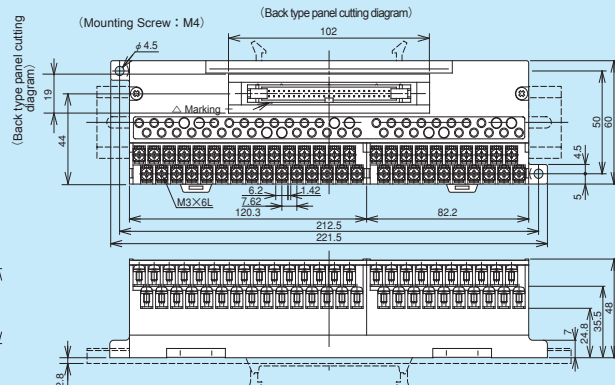
*Front and back row connector pin assignment are reversed in case of using back side type

LED Installed Interface Terminal 7.62mm Pitch

PS7L-50V/H/B



PX7L-50V/H/B



*Front and back row connector pin assignment are reversed in case of using back side type



UL Compliant List

UL Compliant Products

P/N	Voltage Rating	Maximum Current	Recommended wire	Note
PM5D	125V	1A	Solid: 14-26AWG. Stranded: 16-22AWG.	
PM5DW	125V	1A	Solid: 14-26AWG. Stranded: 16-22AWG.	
PM5WR	Input: TB side: DC24V CN side: AC125V / DC30V Output: TB side: AC250V / DC30V CN side: DC24V	Input: 1A (Resistance Inductive load) Output: 3A (Resistance load) 2A (Inductive load)	Solid: 14-26AWG. Stranded: 16-22AWG.	

UL Compliant Connectors

P/N	Manufacturer	Mounting Direction	Part Number	Note
2	Omron	V/B	XG4A- () 31	(): Connector pin number
		H	XG4A- () 34	
12	Daiichi Denshi	V/B	FRC5 - C () S53T - OL	(): Connector pin number
		H	FRC5 - C () L53T - OL	
13	JST	V/B	RX - H () ITD -1190	(): Connector pin number
		H	RX - H () ISD -1190	
14	3M	V/B	3 ()- 6002LCSC	(): Pin number code 428: 20P, 440: 30P, 431: 34P, 432: 40P, 433: 50P
		H	3 ()- 6002LCSC	

UL, C-UL Compliant Products

P/N	Voltage Rating	Maximum Current	Recommended wire	Note
PS5D	125V	1A	14-20AWG.	
PS7DS / PX7DS	125V	1A	16-20AWG.	
PS7DW / PX7DW	125V	1A	16-20AWG.	
PS7L / PX7L	DC24V	Input: 7mA (Input Impedance: 3.3kΩ) Output: 500mA	16-20AWG.	
PSDS/PXDS	125V	1A	14-18AWG.	
PSD / PXD	125V	1A	14-18AWG.	
PSL / PXL	DC24V	Input: 7mA (Input Impedance: 3.3kΩ) Output: 500mA	14-18AWG.	
PSP / PXP	DC24V	10mA MAX. (Open collector)	14-18AWG.	
PSND	125V	1A	10-16AWG.	
PSWR / PXWR	Input: TB side: DC24V CN side: AC125V / DC30V Output: TB side: AC250V / DC30V CN side: DC24V	Input: 1A (Resistance Inductive load) Output: 3A (Resistance load) 2A (Inductive load)	14-18AWG.	
PSWP / PXWP	Input : TB side: DC24V CN side: DC30V MAX. Output: TB side: DC30V MAX. CN side: DC30V MAX.	10mA MAX. (Open collector)	14-18AWG.	
PSWPX / PXWPX	Input : TB side: DC24V CN side: DC30V MAX. Output: TB side: DC30V MAX. CN side: DC24V MAX.	Input: 10mA MAX. (Open collector) Output: 100mA MAX. (Open collector)	14-18AWG.	
PSTD	125V	1A	14-18AWG.	

UL, C-UL Compliant Connectors

P/N	Manufacturer	Mounting Direction	Part Number	Note
2	Omron	V/B	XG4A- () 31	() : Connector pin number
		H	XG4A- () 34	
12	Daiichi Denshi	V/B	FRC5 - C () S53T - OL	() : Connector pin number
		H	FRC5 - C () L53T - OL	
13	JST	V/B	RX - H () ITD -1190	() : Connector pin number
		H	RX - H () ISD -1190	
14	3M	V/B	3 () - 6002LCSC	() : Pin number code 428: 20P, 440: 30P, 431: 34P, 432: 40P, 433: 50P
		H	3 () - 6002LCSC	

CSA Compliant Products

P/N	Voltage Rating	Maximum Current	Recommended wire	Note
PM5D	125V	1A	Solid: 14-26AWG. Stranded: 16-22AWG.	
PM5DW	125V	1A	Solid: 14-26AWG. Stranded: 16-22AWG.	
PM5WR	Input: TB side: DC24V CN side: AC125V / DC30V Output: TB side: AC250V / DC30V CN side: DC24V	Input: 1A (Resistance Inductive load) Output: 3A (Resistance load) 2A (Inductive load)	Solid: 14-26AWG. Stranded: 16-22AWG.	
PS5D	125V	1A	14-20AWG.	
PS7DW / PX7DW	125V	1A	16-20AWG.	
PS7L / PX7L	DC24V	Input: 7mA (Input Impedance: 3.3kΩ) Output: 500mA	16-20AWG.	
PSD / PXD	*125V(60V)	1A	14-18AWG.	
PSL / PXL	DC24V	Input: 7mA (Input Impedance: 3.3kΩ) Output: 500mA	14-18AWG.	Except IZ
PSP / PXP	DC24V	10mA MAX. (Open collector)	14-18AWG.	
PSND	125V	1A	10-16AWG.	
PSWR / PXWR	Input: TB side: DC24V CN side: AC125V / DC30V Output: TB side: AC250V / DC30V CN side: DC24V	Input: 1A (Resistance Inductive load) Output: 3A (Resistance load) 2A (Inductive load)	14-18AWG.	
PSWP / PXWP	Input : TB side: DC24V CN side: DC30V MAX. Output: TB side: DC30V MAX. CN side: DC30V MAX.	10mA MAX. (Open collector)	14-18AWG.	
PSWPX / PXWPX	Input : TB side: DC24V CN side: DC30V MAX. Output: TB side: DC30V MAX. CN side: DC24V MAX.	Input: 10mA MAX. (Open collector) Output: 100mA MAX. (Open collector)	14-18AWG.	
PSTD	125V	1A	14-18AWG.	

*Voltage rating of P/N "8" and "8-F" are 60V.

CSA Compliant Connectors

P/N		Mounting Direction	Part Number	Note
5	Fujitsu	V/B	FCN - 604Q064-G/M	Only 64p is capable
		H	FCN - 605Q064-G/M	
6		V/B	FCN - 364P040-AU	Only 40p is capable
		H	FCN - 365P040-AU	
8	HTK	V/B	MR- () RMD2	() : Connector pin number
8-F	Honda Tsushin Kogyo	V/B	MR- () RFD2	
9			Obsolete	
10	Yamaichi Electronics	V/B	FAB- () 01-1204-OBS	() : Connector pin number
		H	FAB- () 01-1202-OBS	
14	3M	V/B	3 () - 6002LCSC	() : Pin number code 662: 10P, 408: 16P, 428: 20P, 440: 30P, 431: 34P, 432: 40P 433: 50P
		H	3 () - 5002LCSC	
3A	JAE	V	DA-15P-T-N	
			DB-25P-T-N	
			DC-37P-T-N	
4A	Hirose Connectors	V	SDAB-15P	
			SDBB-25P	
			SDCB-37P	

★ The products and specifications described in this manual or the content and presentation of the manual may be changed without notice to improve the product and/or the manual.

